

## Acetate HiVeg™ Agar

MV1225

Acetate HiVeg Agar is recommended for the isolation and cultivation of *Leuconostoc* and *Pediococcus* species.

**Composition \*\* :**

Ingredients	Grams/Litre
HiVeg extract No. 1	5.0
Glucose	10.0
HiVeg peptone	5.0
Yeast extract	5.0
Polysorbate 80	0.5
Sodium acetate .3H <sub>2</sub> O	27.22
Agar	20.0

Final pH (at 25°C) 5.4 ± 0.2

\*\* Formula adjusted, standardized to suit performance parameters.

**Directions :**

Suspend 61.9 grams of dehydrated powder in 1000 ml distilled water. Heat to boiling to dissolve the medium completely. Sterilize by autoclaving at 15 lbs pressure (121°C) for 15 minutes. Mix well and pour into sterile petri plates.

**Principle and Interpretation :**

Acetate HiVeg Agar is prepared by using HiVeg extract No.1 and HiVeg peptone which are vegetable based peptones instead of animal based peptones, thus making the medium BSE/TSE risk free. It is the modification of Acetate agar which was formulated by Whittenbury (1) and then modified by Keddie (2) for selective isolation of *Lactobacilli*. HiVeg peptone, Yeast extract, HiVeg extract No.1 provide all essential growth nutrients. Glucose is the energy source.

**Quality Control :****Appearance of powder**

Light yellow coloured, may have slightly greenish tinge, homogeneous, free flowing powder.

**Gelling**

Firm, comparable with 2.0% Agar gel.

**Colour and Clarity**

Yellow coloured, clear to slightly opalescent gel forms in petri plates.

**Reaction**

Reaction of 6.19% w/v aqueous solution is pH 5.4 ± 0.2 at 25°C.

**Product Profile :**

Vegetable based (Code MV) ©	Animal based (Code M)
<b>MV1225</b> HiVeg extract No. 1 HiVeg peptone	<b>M1225</b> Meat extract Peptic digest of animal tissue

**Recommended for** : Isolation and cultivation  
*Leuconostoc* & *Pediococcus*.

**Reconstitution** : 61.9 g/l

**Quantity on preparation (500g)** : 8.07 L

**pH (25°C)** : 5.4 ± 0.2

**Supplement** : None

**Sterilization** : 121°C / 15 minutes.

**Storage** : Dry Medium and Prepared Medium 2 - 8°C.

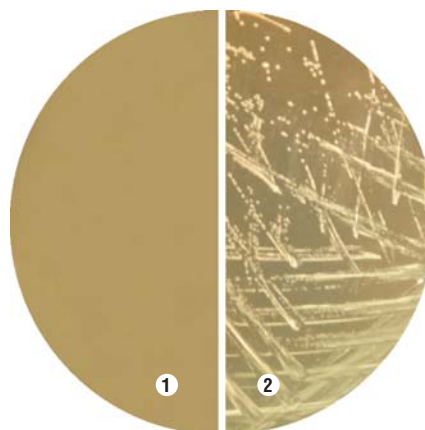
**Cultural Response**

Cultural characteristics observed after an incubation at 25-30°C for 18 - 48 hours.

Organisms (ATCC)	Growth
<i>Enterococcus faecalis</i> (29212)	none-poor
<i>Leuconostoc mesenteroides</i> (12291)	good-luxuriant
<i>Pediococcus acidilactici</i> (33314)	good-luxuriant

**References :**

- Whittenbury R., 1965 b, J. Gen. Microbiol., 40:97.
- Keddie R.M., 1951, Proceed. Soc. Appl. Bacteriol., 14:157.

**MV1225 Acetate HiVeg Agar**

- Control
- Leuconostoc mesenteroides*