

Seed Sequencing: Unlock the Potential of Your Crops!

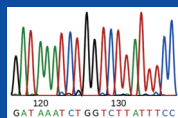
Which plant species do we belong to?

Well let's figure it out with MBS120 –
Identification of Eukaryotes from
Biological Sample

Seed samples
such as soybean,
maize, wheat etc. can
be analyzed

Simple
Process,
Powerful
Results

100mg Seeds
Sample



MBS120

Unlock Valuable
Information

Our comprehensive analysis goes beyond the
raw data, providing actionable insights:

- **Gel Image:** Visualize the size and separation of DNA fragments.
- **Blast Results:** Identify similar sequences in public databases.
- **Electropherogram:** Trace the electrophoretic movement of DNA.
- **Assembly:** Reconstruct the complete DNA sequence from fragments.
- **Phylogenetic Analysis:** Understand the evolutionary relationships between your seeds and other varieties.
- **Raw Files:** Access the complete dataset, including .abi1 and fastq files.
- **Trace QC Report:** Ensure the quality of your sequencing data.

Scan to view
Demo report



Scan to fill
Inquiry form

