



Send your Inquiry



Microbiome Services

A potential tool for high-throughput phylogenetic analysis of microbial communities. Allows species identification and taxonomic diversity characterization



View our Demo Report

Highlights



Unmatched precision (accuracy & sensitivity)



Scale read lengths:
2 x 250 to 2 x 300bp
Scale data output:
0.1m to 0.5m PE reads



Fast & accessible to broad range of applications
(see the back page)

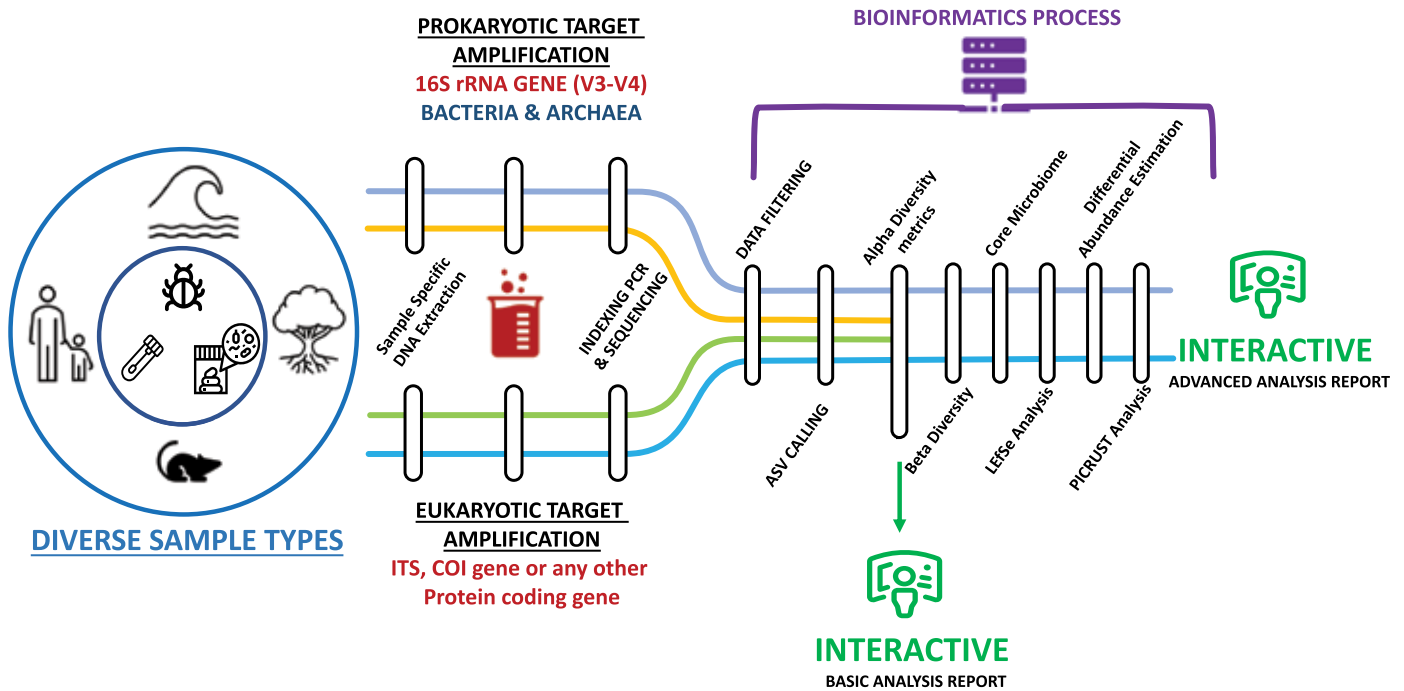


Future proof & backwards compatible to evolving software tools



Customized & tailored to your research questions

Microbiome Services End-to-End Workflow



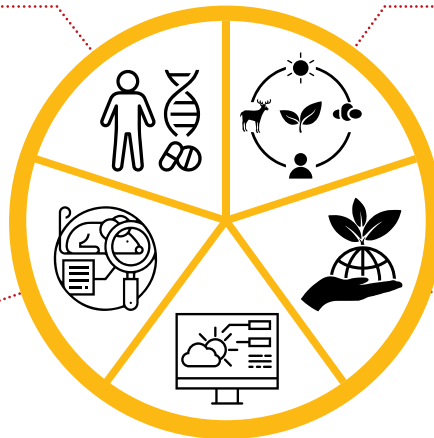
Applications

Personalized Human Health

The human microbiome profile offers a direct link to health insights so that one can tweak or plan dietary lifestyle and even medical interventions.

Animal Studies

Add another dimension to your animal studies about key diseases/ treatments / interventions by collection of microbiome profiles in a case-control setting.



Environmental Monitoring

Monitor, surveil and derive deeper insights into your production and lab areas for effective biocontrol strategies

Ecosystem Studies

Know what microbial consortia controls various ecosystem processes and services linked to various biogeochemical cycles and enhance our understanding of climate change.

Sustainable Agriculture

Tweak and study plant microbiome to enhance yield and enabling transition to next generation sustainable agriculture.



For Life is Precious

HiMediaLaboratories™

www.himedialabs.com

CORPORATE OFFICE

Plot No. C40, Road No.21Y, MIDC, Wagle Industrial Estate, Thane (West) - 400604, Maharashtra, India.

Tel : +91-22-6147 1919 / 6116 9797 / 6903 4800 | Fax : +91-22-6147 1920

Email : higx360@himedialabs.com / mbcoordinator@himedialabs.com / mb@himedialabs.com

Copyright © 2024 - HiMedia Laboratories Pvt. Ltd. All rights reserved.



Literature Code : TL905_00/Microbiome Sequencing/0724