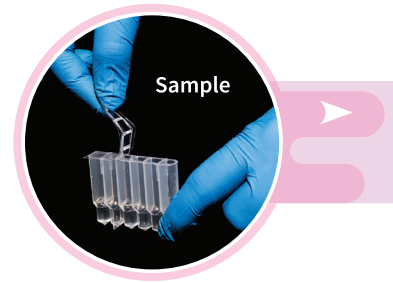


Veterinary Diagnostics

Cherishing Human Animal Bond




Complete Automation for Veterinary Diagnostics



HiPurA® Extraction Kits

MANUAL

SILICA COLUMN BASED 

DNA

MB504*	Blood Genomic DNA Miniprep
MB505*	Bacterial Genomic DNA
MB506	Mammalian Genomic DNA
MB522	Sperm Genomic DNA
MB529	Insect DNA
MB544#	Stool DNA
MB554	Multi-Sample DNA
MB575	Viral DNA

RNA

MB602	Total RNA Miniprep
MB615	Viral RNA
MB618#	Tissue RNA
MB619	Blood Genomic DNA Miniprep

Nucleic Acid

MB582*	Viral DNA / RNA
MB583*	DNA / RNA

AUTOMATED

MAGNETIC BEAD BASED 

Blood Genomic DNA*
MB504PC16



Pre-filled Cartridges
for Single Sample
Processing

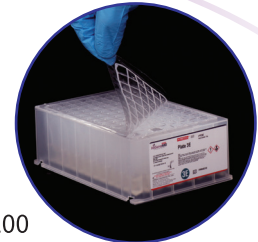
Tissue RNA#
MB618PC16200

Bacterial Genomic DNA*
MB505PC16

Viral Nucleic Acid*
MB582PC16

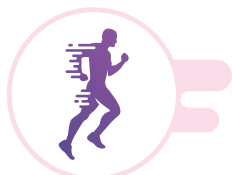
**Clinical Multi-purpose*
Nucleic Acid** MB583PC16200

Stool DNA#
MB544PC16

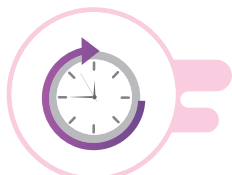


Pre-filled Plates

WHY USE PRE-FILLED KITS?



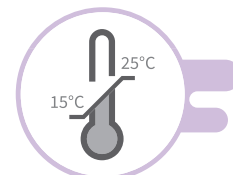
Ready-to-use



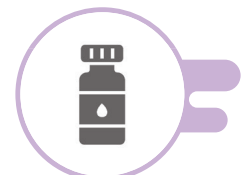
Time Saving



Shelf Life



Room Temp. Storage



Zero Reagent Wastage

Note : Also available kits for * - Insta NX® Mag32 & Insta NX® Mag96, # - Insta NX® Mag32

Automated
Nucleic Acid Extractor



InstaNx® Mag 16 Series

Downstream
Applications

Automated
PCR



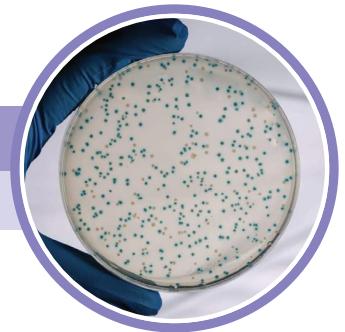
Insta Q96® Series

Hi-G³⁶⁰

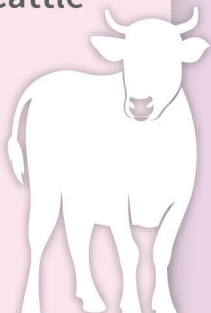
Sequencing &
Bioinformatics
Services

For Cloning Purpose

HiPurA® Pre-filled Cartridges / Plates for Plasmid DNA Extraction - MB508 Series



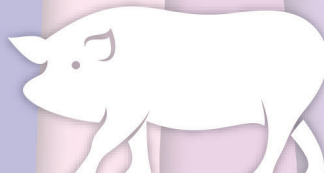
Cattle



Sheep / Goat



Swine



Poultry



Feline / Canine



Hi-PCR® Kits for Veterinary Diagnostics

CATTLE

MBPCR162	Brucella Probe*
MBPCR164	Infectious Bovine Rhinotracheitis (IBR) Probe*
MBPCR168	Peste Des Petits Ruminants (PPR) Probe
MBPCR169	Hemorrhagic Septicemia (HS) Probe
MBPCR214	Trypanosoma evansi SYBr#
MBPCR224	Bluetongue Virus (BTV)SYBr#
MBPCR261	Babesia bigemina SYBr
MBPCR165	Theileria Probe
MBPCR252	Protozoan Parasite Multiplex Probe

POULTRY

MBPCR166	Newcastle Disease Virus (NDV) Probe
MBPCR165	Theileria Probe*
MBPCR167	Mycoplasma Gallisepticum Probe

SHEEP / GOAT

MBPCR125	Babesia Bigemina SYBr
MBPCR214	Trypanosoma Evansi SYBr
MBPCR163	Capripox Probe

FELINE / CANINE

MBPCR215	Brucella Canis SYBr
----------	---------------------

SWINE

MBPCR256	African Swine Fever Virus (ASFV) Probe
----------	--

MEAT TESTING

Pathogen Detection

MBPCR261	Anthrax Multiplex Probe
MBPCR099	Salmonella Probe*
MBPCR238	Generic E. coli Probe
MBPCR154	E.coli O157:H7 Probe

Adulteration Detection

MBPCR139	Cow Probe
MBPCR141	Cow-Buffalo Probe
MBPCR143	Horse Probe
MBPCR144	Sheep Probe

Note : Also available * - Semi-Q & SYBr Kit, # - Semi-Q Kit

MBTD001 - Toxin Detection Kit

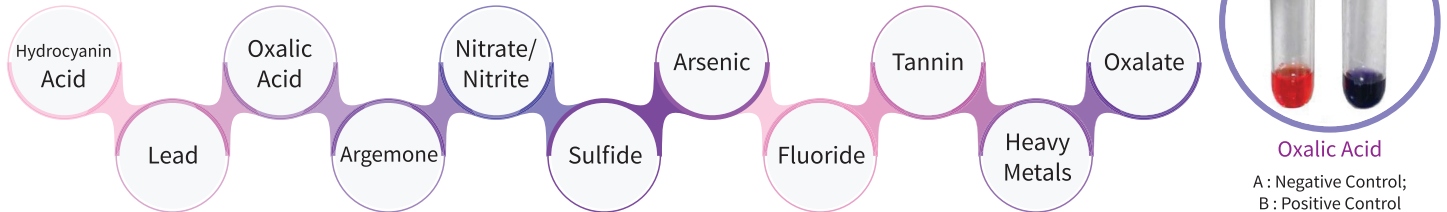
- A quick field test to detect toxin in serum, urine/blood, stool, tissue and fodder
- No Instruments required
- No technical expertise required for result interpretation

POC TESTING

RAPID SPOT TEST



TOXINS DETECTED



HiPer® Teaching Kits for Veterinary Applications

NURTURING CURIOSITY

- DNA/RNA Extraction Kits
- PCR Kits
- Protein Assay Kits
- ELISA Kits
- And many more...

WHY HiPer® TEACHING KITS?


- ✔ Do-It-Yourself Kits
- ✔ Premium quality Research grade Ready-to-use kits.
- ✔ Improves expertise & Hands-on Skills.
- ✔ Promotes Evidence-based study
- ✔ Makes teaching & learning an unforgettable experience




... expect only quality from us™

HiMedia Laboratories Pvt. Ltd.

Corporate Office : Plot No. C40, Road No. 21Y, MIDC, Wagle Industrial Estate, Thane (West) - 400604, Maharashtra, India.

 www.himedialabs.com

 info@himedialabs.com

 +91-22-6903 4800

