

# Prima-duo®

Two Aluminium alloy blocks of 48 wells compatible  
with 0.2ml PCR tubes

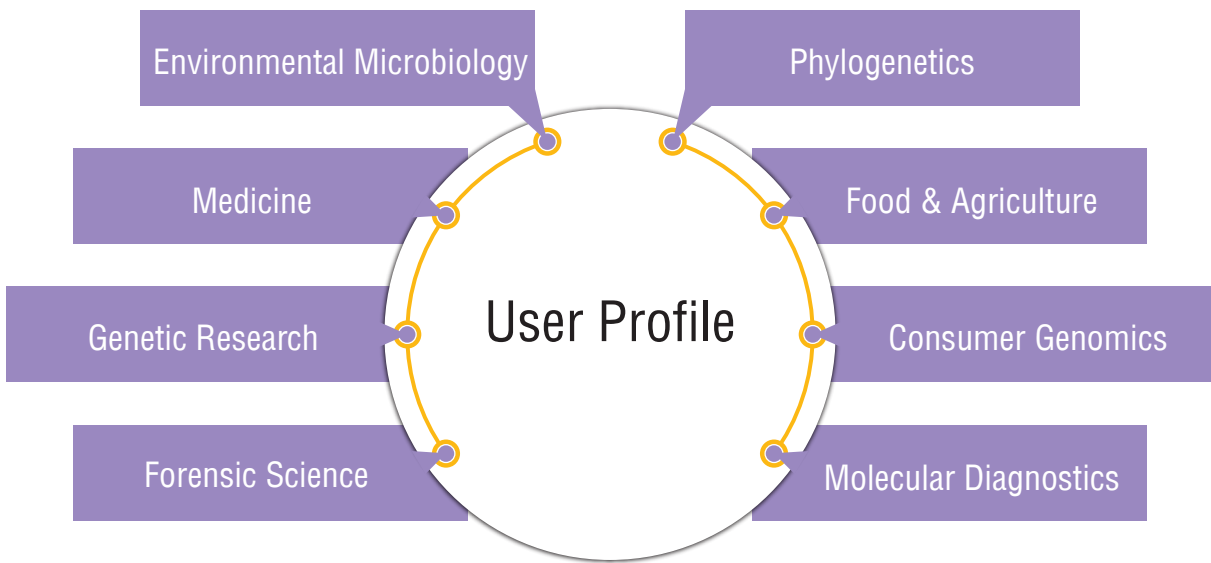


**LA948**

with "TFT, 8 inches,  
800 x 600 pixels, Touch Screen"

HiMedia Laboratories Pvt. Ltd. is the one of the world leading manufacturers for serving science. Our mission is to develop innovative technologies and provide comprehensive services to accelerate scientific discovery.

The Prima-DUO® Thermal Cycler delivers proven unparalleled reliability combined with best in class features to meet your today's and tomorrow's PCR needs.

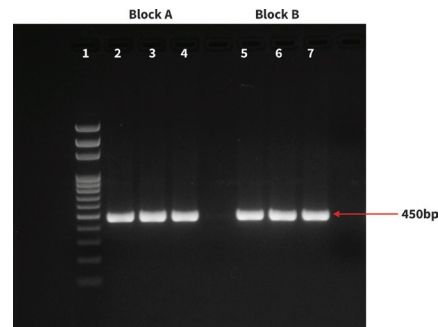


**LA948A**  
48 x 0.2 ml Well Block

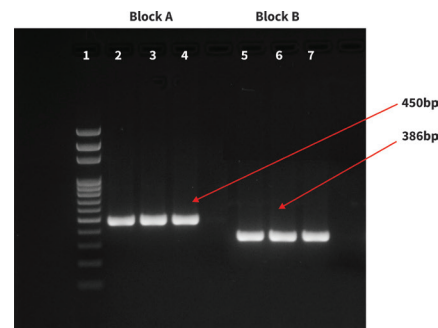
## Salient Features

- 1) Each thermal block has 4 independent temperature control sensors and 8 peltier heating units to ensure accurate and uniform temperature across the block surface; provide users for replicating previous condition set-up.
- 2) 8" TFT color touch- screen with graphical display provides easy use for setting up and monitoring.
- 3) The actual and target temperature can be viewed and displayed graphically in real time.
- 4) Built-in 11 standard program file templates: Touchdown, Standard, Nested Primer, iTaq, iScript, iProof, Gradient can quickly edit the required files.
- 5) Internal flash memory for 10000 typical PCR files in free configurable folders.
- 6) Automatic restart after power failure
- 7) Dynamic ramping keeps incubation times constant
- 8) Compatible with devices such as mouse and keyboard and capable to transfer data and perform software updates via USB drive.
- 9) Compatible with 0.2ml tube, 0.2 ml PCR 8 strip tubes, 0.2 ml non-skirted & semi-skirted plates.
- 10) Replaceable module; the choice of a 96 well block & 384 block module can run a single PCR program using a 96-well plate.
- 11) Simultaneously control up to 11 pcr system by connecting single Ethernet Hub.
- 12) A convenient USB port is outfitted on systems for data transfer & product updates.
- 13) User password protected : secure system access
- 14) GLP report records every step to provide accurate data support for experiment result analysis
- 15) One click quick incubation function
- 16) System is capable of testing temperatures at denaturation, Annealing & extension steps.

## Performance data



Data of two different PCR programs ran simultaneously in blocks A & B of Prima-DUO machine



Data of two same PCR programs ran simultaneously in blocks A & B of Prima-DUO machine

## PCR Related Reagents

### Reverse Transcription Enzymes

MBT072

### Reverse Transcription Enzymes

MBT060	MBT060D	MBT069
MBT060A	MBT060E	MBT070
MBT060B	MBT068	MBT088
MBT060C		

### dNTPs

MBT054	MBT057	MBT059
MBT055	MBT058	MBT078
MBT056	MBT079	

### PCR Enhancers

MBT085	MBT086
--------	--------

### PCR Master Mixes

MBT061	MBT089	MBT119
MBT095		

## Specifications

Product Code	LA948
Product Name	Prima-DUO®
Sample capacity	48 x 0.2ml x 2 blocks
Peltier Number	8
Block material	Aluminum Alloy
Temperature Range(°C)	0-100°C
Heating Rate(°C/sec)	5°C / Sec
Cooling Rate(°C/sec)	4°C / Sec
Sample Ramp Rate	4-4.2°C / Sec
Control Accuracy(°C)	≤ ± 0.1°C
Uniformity(°C)	≤ ± 0.2°C
Control Mode	Block, Tube
Hot-lid Temperature(°C)	30-110°C (step less adjustable)
Gradient Range(°C)	1-30°C
Gradient Temp Range(°C)	30°C - 100°C
Reaction Volume Range	10-100 µl
Display Interface	8 inches, 800x600 Pixels, TFT, LCD Touch screen
Instrument Memory	10000 files + (USB Flash)
Auto restart facility	Yes
Temperature Time Increment / Decrement	0.1 - 10°C ; 1 sec - 600 sec
Pause function	Yes
Edit File While Running	Yes
Support for USB Mouse & Touch screen	Yes
Touch calibration option	Yes
Tm Calculator	Yes
No of steps & cycles	30 steps & 100 cycles
Connection	USB 2.0, LAN
Network Control	Yes
Preloaded Protocol	Yes
Input Voltage & Input Power	AC85-264V, 47-63Hz & 600W
Footprint(DxWxH)	38x24x26 cm (14.9x9.4x10.2 inches)
Weight	8.5 kg (18.7 lb)
Standard Warranty	Limited Warranty
Certification	CE, ANVISA
Interchangeable Block Format	LA949A, LA949B, LA949C, LA1111A



Literature Code : TL339-05/PCR Prima-DUO/0120

HiMedia Laboratories Pvt. Ltd.  
www.himedialabs.com

- CORPORATE OFFICE -

Plot No. C-40, Road No. 21Y, Wagle Industrial Area, Thane (West) - 400604, Maharashtra, INDIA.

Tel : +91-22-6147 1919 / 6116 9797 / 6903 4800 | Fax : +91-22-6147 1920 | Email : biomedical@himedialabs.com / info@himedialabs.com



...expect only quality from us™