

# Wee Dry<sup>®</sup>



## Introduction

Wee dry® is a microprocessor-controlled, fast heating micro-tube block. It is suitable for a range of uses in life science, molecular biology, environmental and industrial laboratories and a variety of applications including incubation, enzyme reactions, and immuno-assays. tissue /cell culture, biochemistry, genetics & proteomics.

## Features:

- ◆ Compact Size
- ◆ Light Weight (**800 gm**)
- ◆ Easy to use
- ◆ LCD Display
- ◆ Automatic block recognition
- ◆ Automatic fault detection & alarm function

## Technical Specification

Product Name with Code	Wee Dry® - LA1115
Capacity	As per blocks (LA1115A, LA1115B, LA1115C & LA1115D)
Temperature control range	RT.+5°C-100°C
Timer range	1-999min or 1-999sec
Temp. control accuracy	±0.5°C
Display accuracy	±0.1°C
Heating time (25°C to Max.)	≤15min
Temp. stability	±0.3°C
Power supply	DC 24V
Dimensions (W x D x H)mm	120 × 152 × 112 mm
Weight	0.8kg

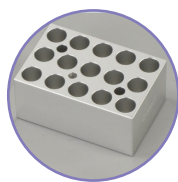
## Accessories

LA1115A - 15 X 0.2 ml Block

LA1115B - 2 X 50 ml Block

LA1115C - 4 X 15 ml Block

LA1115D - 24 X 0.5 ml Block



LA1115A



LA1115B



LA1115C



LA1115D

**HiMedia Laboratories Pvt. Ltd.**

[www.himedialabs.com](http://www.himedialabs.com)

- CORPORATE OFFICE -

Plot No. C-40, Road No. 21Y, MIDC, Wagle Industrial Estate, Thane (W) - 400604, Maharashtra, INDIA.

Tel. : +91 22 6116 9797/6147 1919/6903 4800 Fax : 00-91-22-6147 1920

Email : [info@himedialabs.com](mailto:info@himedialabs.com), [biomedical@himedialabs.com](mailto:biomedical@himedialabs.com)