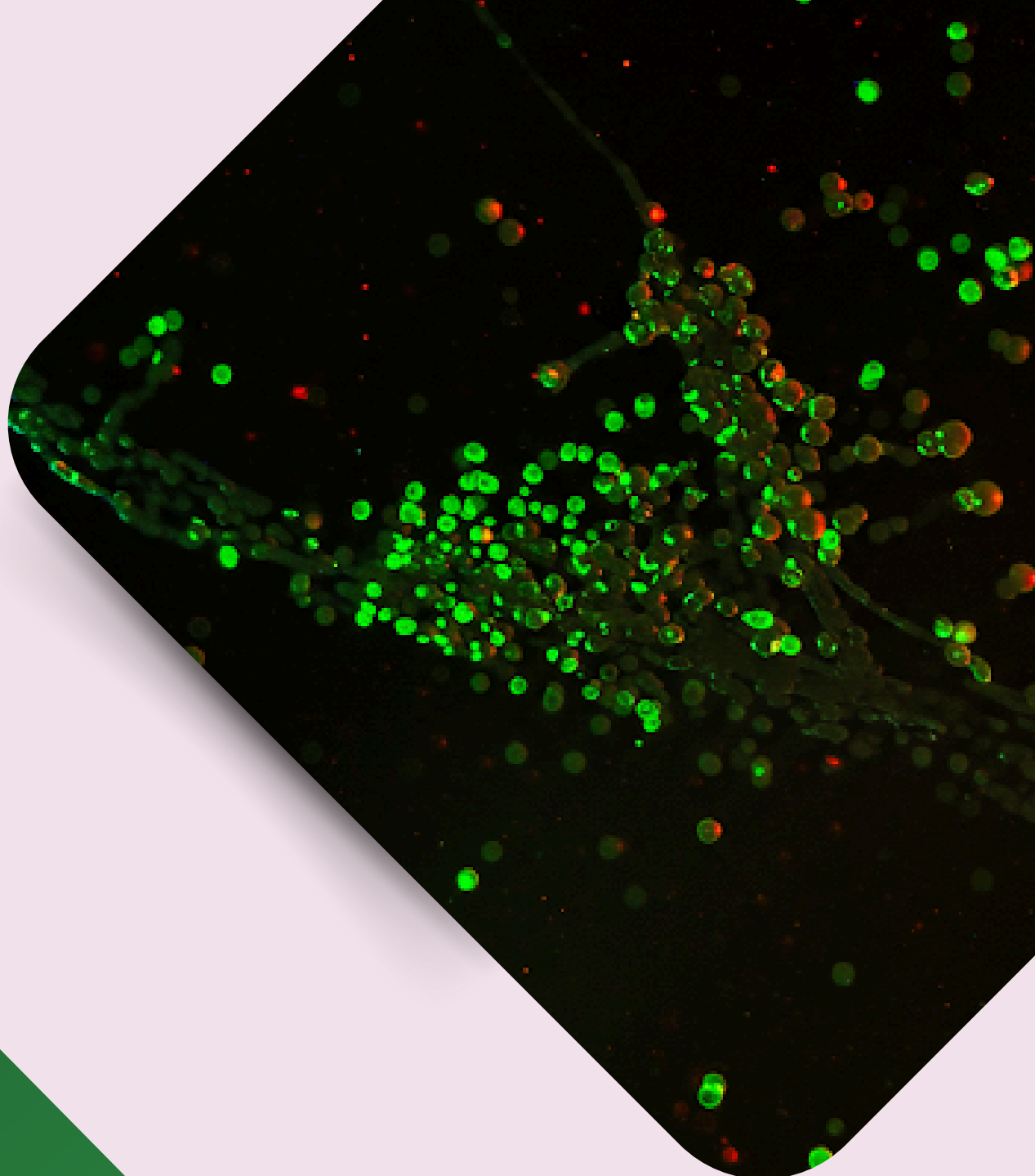


Luria Bertani Broth, Miller

(Miller Luria Bertani Broth)

G1245

Recommended for the cultivation & maintenance of **recombinant strains** of *Escherichia coli* for genetic and molecular biology studies

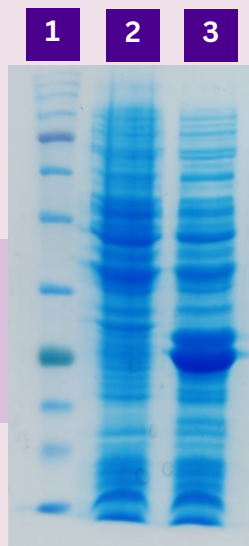


Luria Bertani Broth, Miller (Miller Luria Bertani Broth) - G1245

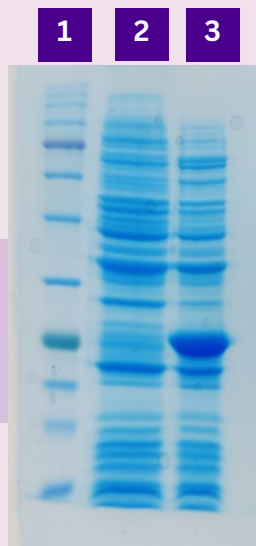


Protein induction by using G1245

1. Protein Ladder
2. Before Induction
3. After Induction



GST-Tagged Protein
expression



HIS-Tagged Protein
expression

Plasmid DNA extraction by using G1245



1 , 2 , 3 -Extracted pUC19
Plasmid DNA

Applications

Used for Transformation,
Cloning, Bacterial gene
expression and many
other downstream
applications

Used for the cultivation
and maintenance of
recombinant strains of *E.
coli*

Used for molecular
and genetic studies