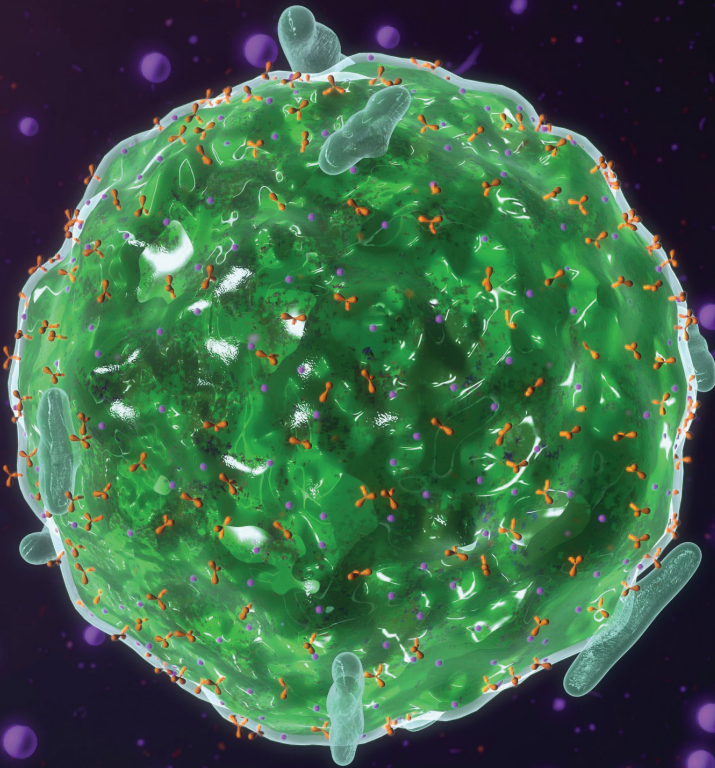


# Cytokines & Growth Factors

For Immunology & Stem Cell Research



**HIMEDIA**®

For Life is Precious

 **CELLBio**™

# Cytokines by Applications

## Hematopoietic Stem Cell Research

Product	Species	Source	Code
TNF- $\alpha$	Human	E. coli	TC313
G-CSF	Human	E. coli	TC316
	Murine	E. coli	TC322
GM-CSF	Human	E. coli	TC315
	Murine	E. coli	TC321
IL-3	Human	E. coli	TC361
	Murine	E. coli	TC479
IL-6	Human	E. coli	TC364
	Murine	-	TC481
SCF	Human	E. coli	TC333
	Murine	E. coli	TC334
M-CSF	Human	E. coli	TC317
	Murine	E. coli	TC323
TPO	Human	E. coli	TC495
	Murine	E. coli	TC590
EPO	Human	-	TC494
Fit3-Ligand	Human		TC496

## Pluripotent Stem Cell Research

Product	Species	Source	Code
Activin A	Human	E. coli	TC542
FGF-basic	Human	E. coli	TC290
BMP-2	Human	E. coli	TC335
BMP-4	Human	E. coli	TC337
PDGF-BB	Human	E. coli	TC294
	Murine	E. coli	TC328
BMP-2	Human	E. coli	TC335
BMP-4	Human	E. coli	TC337
SCF	Human	E. coli	TC333
	Murine	E. coli	TC334
TGF- $\beta$ 1	Human	HEK293	TC298
		CHO	TC299
	Murine	-	TC483
	Human	E. coli	TC499
LIF	Murine	E. coli	TC528
	Human	E. coli	TC291
VEGF	Murine	E. coli	TC427

## Immunology Research

Product	Species	Source	Code
TNF- $\alpha$	Human	E. coli	TC313
G-CSF	Human	E. coli	TC316
	Murine	E. coli	TC322
IFN-g	Human	E. coli	TC423
	Murine	E. coli	TC451
IL-1 $\alpha$	Human	E. coli	TC360
IL-1 $\beta$	Human	E. coli	TC363
IL-2	Human	E. coli	TC366
IL-3	Human	E. coli	TC361
	Murine	E. coli	TC479
IL-4	Human	E. coli	TC362
	Murine	-	TC480
IL-6	Human	E. coli	TC364
	Murine	-	TC481
IL-7	Human	E. coli	TC365
IL-11	Human	E. coli	TC635
GM-CSF	Human	E. coli	TC315
	Murine	E. coli	TC321

## Mesenchymal Stem Cell Research

Product	Species	Source	Code
FGF-basic	Human	E. coli	TC290
PDGF-BB	Human	E. coli	TC294
	Murine	E. coli	TC328
BMP-2	Human	E. coli	TC335
BMP-4	Human	E. coli	TC337
TGF- $\beta$ 1	Human	HEK293	TC298
		CHO	TC299
	Murine	-	TC483
	Human		TC309
TGF- $\beta$ 3	Human	E. coli	TC310
	Human	E. coli	TC300
IGF-I	Murine	E. coli	TC254

## Vascular Biology Research

Product	Species	Source	Code
VEGF	Human	E. coli	TC291
	Murine	E. coli	TC427
TNF- $\alpha$	Human	E. coli	TC313
IL-1 $\alpha$	Human	E. coli	TC360
IL-1 $\beta$	Human	E. coli	TC363
IL-4	Human	E. coli	TC362
	Murine	-	TC480
IFN-g	Human	E. coli	TC423
	Murine	E. coli	TC451

## Neurobiology Research

Product	Species	Source	Code
BMP-2	Human	E. coli	TC335
BMP-4	Human	E. coli	TC337
TGF- $\beta$ 1	Human	HEK293	TC298
		CHO	TC299
	Murine	-	TC483
	Human	E. coli	TC290
EGF	Human	-	TC228

# Quality control

## Purity

>= 95% tested by SDS-PAGE and HPLC analysis

## Endotoxin Test

Low endotoxin levels - less than 1 EU/ $\mu$ g

## Biological activity

Determined by cell specific proliferation assay and expressed in terms of ED<sub>50</sub> and specific activity

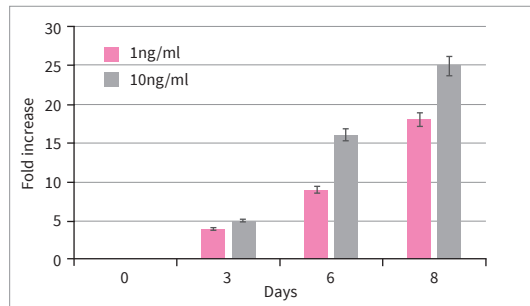


Fig 1 : Cultural response of VEGF was evaluated by adding it at two different concentrations to the culture medium and monitoring HUVEC proliferation at regular intervals

# Cytokines by Families

## Colony Stimulating Factors

Product	Species	Source	Code
G-CSF	Human	E. coli	TC316
	Murine	E. coli	TC322
GM-CSF	Human	E. coli	TC315
	Murine	E. coli	TC321
M-CSF	Human	E. coli	TC317
	Murine	E. coli	TC323
MCP	Human	E. coli	TC426

## EPO/TPO Family

Product	Species	Source	Code
EPO	Human	-	TC494
TPO	Human	E. coli	TC495
	Murine	E. coli	TC590

## IFN Family

Product	Species	Source	Code
IGN-g	Human	E. coli	TC423
	Murine	E. coli	TC451

## Endothelial Growth Factors

Product	Species	Source	Code
VEGF	Human	E. coli	TC291
	Murine	E. coli	TC427
EG-VEGF	Human	E. coli	TC304
Endothelin	-	-	TC468

## FGF Family

Product	Species	Source	Code
FGF-Acidic	Human	E. coli	TC289
FGF-Basic	Human	E. coli	TC290
FGF-10	Human	E. coli	TC605

## IGF Family

Product	Species	Source	Code
IGF-I	Human	E. coli	TC300
	Murine	E. coli	TC254
IGF-II	Human	E. coli	TC301
IGF-I LR <sub>3</sub>	Human	E. coli	TC498

TGF- $\beta$  superfamily

IL Family

TNF Superfamily

FGF Family

IGF Family

EGF Family

EPO/TPO Family

Stem Cell Factors

And many more..

Available in multiple pack sizes -

2 $\mu$ g,

10 $\mu$ g,

50 $\mu$ g,

100 $\mu$ g

Bulk pack available on request

Enquire for bulk rate

## Interleukin Family

Product	Species	Source	Code
IL-1 $\alpha$	Human	E. coli	TC360
IL-1 $\beta$	Human	E. coli	TC363
IL-2	Human	E. coli	TC366
IL-3	Human	E. coli	TC361
	Murine	E. coli	TC479
IL-4	Human	E. coli	TC362
	Murine	-	TC480
IL-6	Human	E. coli	TC364
	Murine	-	TC481
IL-7	Human	E. coli	TC365
IL-8	Human	E. coli	TC368
IL-9	Human	E. coli	TC634
	Murine	E. coli	TC482
IL-10	Human	E. coli	TC424
	Murine	E. coli	TC592
IL-11	Human	E. coli	TC635
IL-13	Human	E. coli	TC425

## TGF- $\beta$ Superfamily

Product	Species	Source	Code
Activin A	Human	E. coli	TC542
BMP-2	Human	E. coli	TC335
BMP-3	Human	E. coli	TC336
BMP-4	Human	E. coli	TC337
BMP-5	Human	E. coli	TC338
BMP-6	Human	E. coli	TC339
BMP-7	Human	E. coli	TC340
BMP-13	Human	E. coli	TC341
TGF- $\alpha$	Human	E. coli	TC297
TGF- $\beta$ 1	Human	HEK293	TC298
TGF- $\beta$ 1	Human	CHO	TC299
TGF- $\beta$ 2	Human	Insect cells	TC307
TGF- $\beta$ 2	Human	HEK293	TC308
TGF- $\beta$ 3	Human	-	TC309
TGF- $\beta$ 3	Human	E. coli	TC310
TGF- $\beta$ 1	Murine	-	TC483

## PDGF Family

Product	Species	Source	Code
PDGF-AA	Human	E. coli	TC293
	Murine	E. coli	TC327
PDGF-BB	Human	E. coli	TC294
	Murine	E. coli	TC328
PDGF-AB	Human	E. coli	TC295
PDGF-AC	Human	E. coli	TC296

## Stem Cell Factor Family

Product	Species	Source	Code
SCF	Human	E. coli	TC333
	Murine	E. coli	TC334
LIF	Human	E. coli	TC499
	Murine	E. coli	TC528

## TNF Superfamily

Product	Species	Source	Code
TNF- $\alpha$	Human	E. coli	TC313
TNF- $\beta$	Human	E. coli	TC314

## Others

Product	Species	Source	Code
DKK-1	Human	HEK293	TC606
EGF	Human	-	TC228
Fit3-Ligand	Human	-	TC496
HGF	Human	Insect cells	TC305
KGF	Human	E. coli	TC288
Human growth Factor	Human	-	TC497
Insulin	Human	-	TC190
	Bovine	-	TC431

**HIMEDIA**®

For Life is Precious

**- CORPORATE OFFICE -**

Plot No. C-40, Road No. 21Y, Wagle Industrial Area, Thane (West) - 400604, Maharashtra, INDIA.

Tel : +91-22-6147 1919 / 6116 9797 / 6903 4800 | Fax : +91-22-6147 1920 | Email : atc@himedialabs.com / info@himedialabs.com