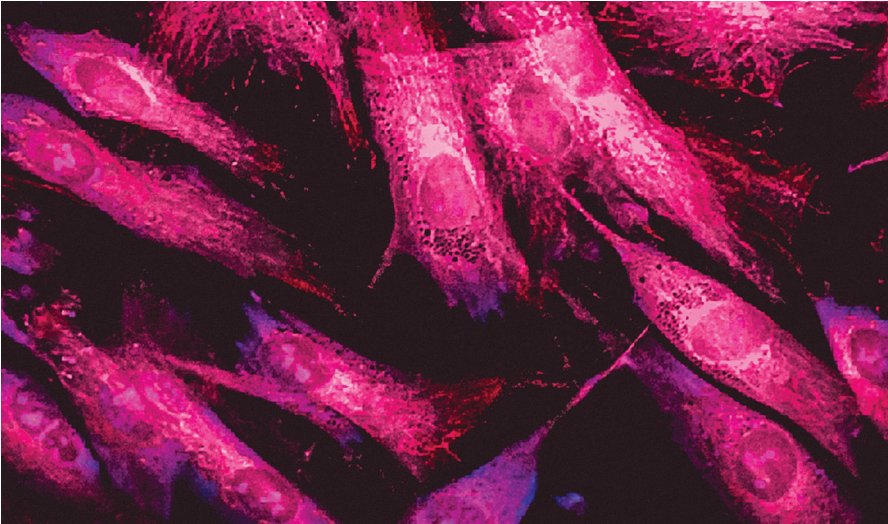


SKIN DERIVED PRIMARY CELLS



Why Choose Us ?

Authenticity

Tissue collection and cell isolation procedures approved by IEC and ICSCR registered at NIH and ICMR

Customization

Customized testing and formats available as per MoA specific assay requirements

Lot reservation

To rule out donor-to-donor variability in cell based assays, an option of lot reservation available.

Qualified Cell Banks

Each cell type is rigorously tested using an extensive array of quality control tests which include cell density, viability, population doublings, marker analysis by immunocytochemistry and / or flow cytometry.

Assured quality

Quality assured cells for quality science

Increased Efficiency

Standard primary cells to speed up your research

Assured flexibility

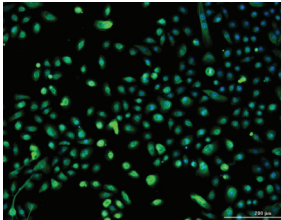
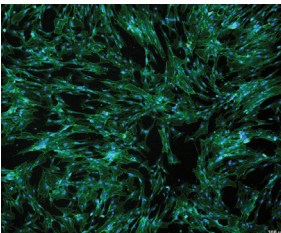
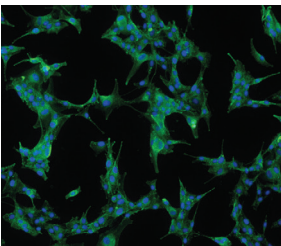
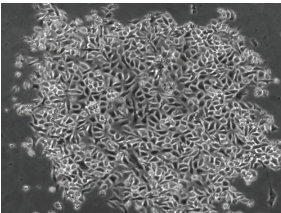
Customized isolation according to need

On time delivery

Despatched as per your schedule

Controlled shipping

Liquid nitrogen shipment for cryopreserved cells

Product Category	Product Name	Product Code	
Keratinocyte Platform	HiFi™ Human Adult Epidermal Keratinocytes (HAEK)	CL006	
	HiFi™ Human Epidermal Keratinocytes from Juvenile Foreskin	CL009	
	HiKeratinoXL™ Keratinocyte Expansion Medium, Serum Free	AL524	
Fibroblast Platform	HiFi™ Human Adult Dermal Fibroblasts (HADF)	CL005	
	HiFi™ Human Dermal Fibroblasts from Juvenile Foreskin	CL011	
	HiFibroXL™ Fibroblast Expansion Medium, Reduced Serum	AL525	
	EZXpand™ Human Adult Dermal Fibroblast Culture Kit	CCK027	
Melanocyte Platform	HiFi™ Human Adult Epidermal Melanocytes (HAEM)	CL015	
	HiFi™ Human Epidermal Melanocytes (HEM) from Juvenile Foreskin	CL022	
	HiSep® Melanocyte Isolation Kit	CCK001	
	HiMelanoXL™ Melanocyte Expansion Medium	AL528	
Also Available			
Mammary Epithelial Cell Platform	HiFi™ Human Mammary Epithelial Cells (HMEC)	CL014	
	HiEpiXL™ Mammary Epithelial Cells Expansion Medium	AL529	

HAEC immuno stained with cytokeratin 5-FITC (10X)

HADF immuno stained with CD90-FITC (10X)

HAEM immuno stained with MEL 5-FITC (10X)

Phase contrast microscopy of HMEC (10X)