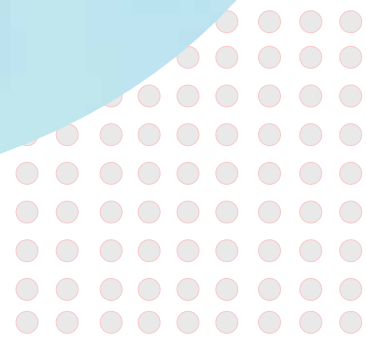
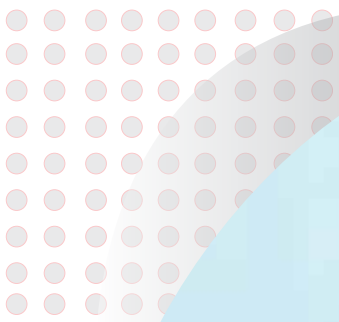


Meeting the Demands of

Cultivated Meat Industry



One Stop Shop For Your Cultivated Meat

Powder Media
Manufacturing
Capacity

60
tons per day
in **2023**

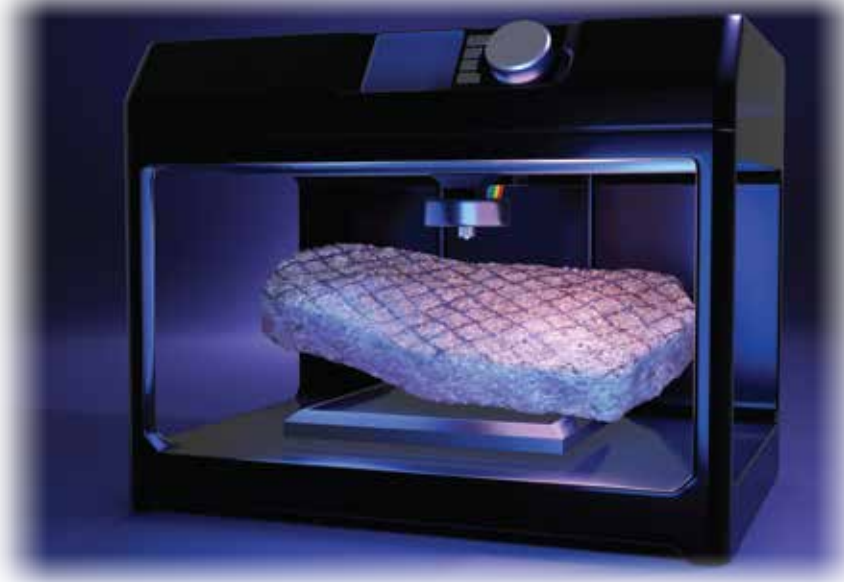
100
tons per day
in **2024**



Food Grade
Raw Materials

- Growth Factors
- Buffers
- Chemicals
- Proteins, Hormones & supplements
- Attachment factors
- Fatty acids & lipids
- Cell culture reagents

Edible Bioinks & 3D Bio Scaffolds & 3D Bioprinter



We Offer Media Optimization & Bio Processing Services for Customer Specific Cells



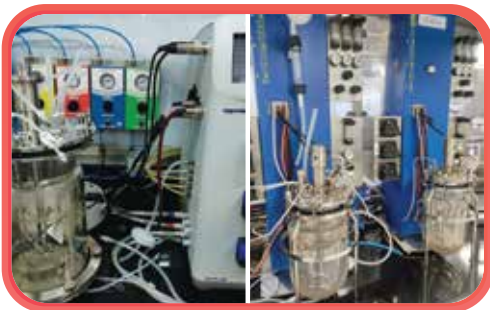
Scale I

High-throughput screening with Robotic Liquid Handling System



Scale II

Media optimization in 1.5L Bioreactors



Scale III

Lab-scale bioreactors in 4L Bioreactors & 5L Benchtop Fermenter



Scale IV

Complete Process Optimization in 10L Bioreactors



Scale V

Pilot Scale Plant In-situ
Sterilizable Bioreactor System in 50L Bioreactors



- Asia
- Africa
- Australia

- North America
- South America
- Europe



OVERSEAS OFFICE
- Europe -
HiMedia Laboratories GmbH,
Marie-Curie-Str. 3, 64683,
Einhausen, Germany.
Tel : +49 6251 989 24 26
Fax : +49 6251 989 24 27
Email :
infoeu@himedialabs.com

OVERSEAS OFFICE
- North America -
HiMedia Laboratories LLC,
507 School House Rd,
Kennet Square 19348,
PA, USA.
Tel : +1-484-734-4401
Fax : +1-484-734-4402
Email :
infous@himedialabs.com

- CORPORATE OFFICE -
Plot No. C40, Road No. 21Y, MIDC,
Wagle Industrial Area,
Thane (West) - 400604,
Maharashtra, India.
Tel : +91-22-6147 1919 / 6116 9797 / 6903 4800
Fax : +91-22-6147 1920
Email : info@himedialabs.com

HiMedia Laboratories Pvt. Ltd.
www.himedialabs.com

