

Launching

A complete solution

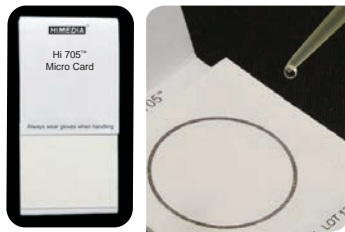
for **Molecular Diagnostics...**

InstaDNA™ Kit + PCR Thermal Cycler



InstaDNA™ Kit

- 15 to 45 min. DNA extraction protocol
- Minimal sample handling
- Easy and convenient sample collection and processing
- Long term sample integrity and stability assured!
- Transportation of samples at Room Temperature Possible? **YES!**



InstaDNA™ Kit

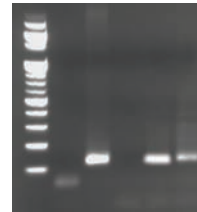
Spot, Elute & Amplify...



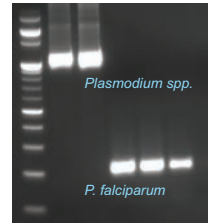
PCR Thermal Cycler

CE Certified

Clinical Diagnosis

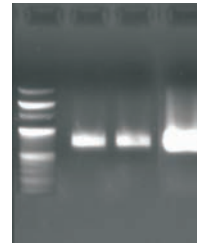


M. tuberculosis detection from sputum and urine sample

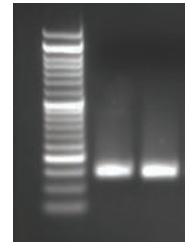


Malarial parasite detection from blood sample

Research

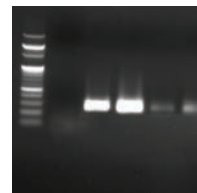


PCR of *S. cerevisiae*



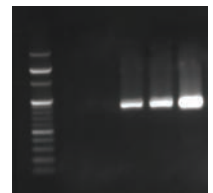
pUC19 plasmid amplification by direct culture spotting

Food Industry



Salmonella spp. detection from non-spiked and spiked processed chicken

Plant & Agriculture



PCR amplification from Hibiscus and Mint plant

PCR Thermal Cycler - Unmatched Performance!!

- 8 peltier heating units to ensure
 - Accurate ($\pm 0.1^\circ\text{C}$) &
 - Uniform ($\pm 0.2^\circ\text{C}$) temperatures
- Heating & Cooling rate : $5^\circ\text{C}/\text{sec}$ & $4^\circ\text{C}/\text{sec}$
- Excellent Gradient range - 1°C to 30°C
 - 12 gradient temperatures (Prima-96)
 - 6 x 2 gradient temperatures (Prima-DUO)
- Internal flash memory for 10000 typical PCR files + USB flash
- **- User Friendly !!**
- Replaceable module
- 8" TFT color touch-screen with graphical display



HiMedia Laboratories™

HiMedia Laboratories Pvt. Limited

A-516, Swastik Disha Business Park, Via Vadhani Indl. Est. LBS Marg, Mumbai - 400 086, India. Tel: 00-91-22-6147 1919 ■ Fax: 6147 1920, 2500 5764
Email : info@himedialabs.com ■ Web : www.himedialabs.com



... expect only Quality from us™